



## Introducing the First and Only Extended Range of Vision IOL



**INDICATIONS FOR USE:** The **TECNIS Symphony**® Extended Range of Vision IOL, Model ZXR00, is indicated for primary implantation for the visual correction of aphakia in adult patients with less than 1 diopter of pre-existing corneal astigmatism, in whom a cataractous lens has been removed. The lens is intended to correct presbyopia by providing improved vision over a continuous range of distances including far, intermediate and near, and decreased spectacle dependence. The lens is intended for capsular bag placement only. The **TECNIS Symphony**® Toric Extended Range of Vision IOLs, Models ZXT100, ZXT150, ZXT225, ZXT300, and ZXT375, are indicated for primary implantation for the visual correction of aphakia and pre-existing corneal astigmatism in adult patients with and without presbyopia in whom a cataractous lens has been removed. The lenses are intended to correct presbyopia by providing improved vision over a continuous range of distances including far, intermediate and near, a reduction of residual refractive cylinder, and decreased spectacle dependence. The lenses are intended for capsular bag placement only.

# Is Your Vision Interfering with Your Daily Activities?

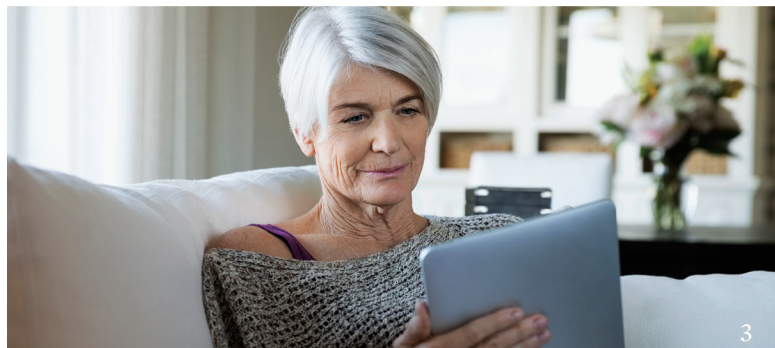


Is your vision cloudy? If so, you may have cataracts. If you are exploring treatment options, **TECNIS Symfony**<sup>®</sup> Intraocular Lens (IOL) may be the right choice for you. **TECNIS Symfony**<sup>®</sup> IOL is the first and only Extended Range of Vision (ERV) Presbyopia-Correcting IOL that provides continuous, high-quality vision at any distance. Consult your doctor to be sure it's right for you.

Also Available for Cataract Patients with Astigmatism.

“When the last prescription only helped for a couple of months, I knew I had to do something. I wanted the latest technology. Now I can see lines more sharply. I see colors more vividly.”

-TECNIS Symfony<sup>®</sup> IOL Patient



# Understanding Your Vision

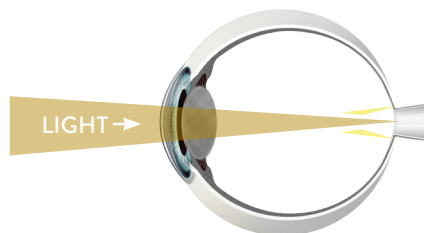
Identifying your particular vision changes can bring you one step closer to the vision of your life.

## WHAT IS A CATARACT?

LIGHT IS SCATTERED, RESULTING IN FUZZY VISION.

Cataract is a condition of the eye where the lens becomes cloudy, making images fuzzier. Your vision with cataracts is cloudy or dark in some areas or across your whole field of vision, and may cause:

- Difficulty driving
- Difficulty seeing at night
- Difficulty viewing a computer screen, a phone or tablet
- Colors to appear dim and faded
- Frequent change in glasses prescriptions

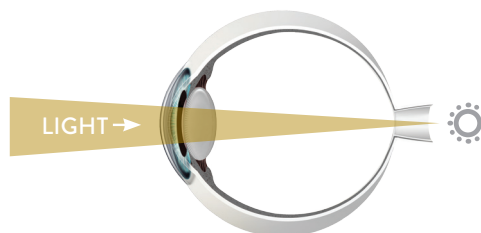


## WHAT IS PRESBYOPIA?

FOCAL POINT IS BEHIND THE RETINA.

In an eye with presbyopia, the natural lens has increasing difficulty focusing on intermediate and near objects. Light fails to reach a single point on the retina when viewing objects up close and instead focuses on a point behind the retina. Common symptoms may include:

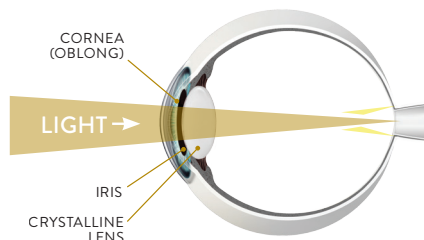
- Losing your ability to read up-close
- Cloudier or fuzzier vision at near distance
- Difficulty viewing a computer screen, a phone or tablet
- Needing reading glasses or bifocals
- Holding objects further away to read



## WHAT IS ASTIGMATISM?

FOCAL POINT DOES NOT FOCUS SHARPLY ON THE RETINA.

In a healthy human eye, the cornea is round in shape like a basketball. Astigmatism occurs when the cornea is shaped more like a football. When light passes through a cornea with astigmatism, the image does not focus sharply on the retina, causing blurred vision.







## Seamless Vision You Can Rely On

**TECNIS Symfony® IOL is the first lens of its kind to combine two unique technologies for outstanding visual performance:**



Elongating the focus of the eye to provide continuous, high-quality vision.



Correcting chromatic aberration (color distortion) to provide sharp vision in all lighting conditions.

### MONOFOCAL IOLs

Monofocal IOLs are used to restore vision in one area of focus – usually distance. Glasses may still be needed for near and intermediate distance activities.



### EXTENDED RANGE OF VISION IOL

An Extended Range of Vision IOL provides a continuous range of high-quality vision – from near to far and points in between – and may reduce the frequency of wearing glasses.



A



**TRADITIONAL (MONOFOCAL)  
IMPLANTABLE LENS\***

B



**TECNIS Symphony® IOL\***

\* Artistic rendering of vision that may be possible with TECNIS Symphony® IOL.

## The Lens Designed for **Everyday Life**

Compare the following images. **Image A** demonstrates what you might see with a traditional implantable lens. Although distance vision is clear, notice how the phone screen, hand and near objects are very blurry.

Now compare that with **Image B** with the **TECNIS Symphony® IOL**. **TECNIS Symphony® IOL** provides high-quality continuous vision at any distance.

**TECNIS**  
**Symphony®**  
Extended Range of Vision IOL

- ✓ **CONTINUOUS, HIGH-QUALITY VISION**
- ✓ **EXCELLENT VISION IN ANY LIGHTING CONDITION**
- ✓ **A LENS FOR LIFE**

*TECNIS Symphony® IOL provides continuous, high-quality vision at all distances and may allow you to wear glasses less often.*



## High-Quality Vision in Low-Light Conditions

Your ability to see in dim light can define when, where, and how you're able to spend your independent time.

With **TECNIS Symfony**<sup>®</sup> IOL you may be able to comfortably enjoy low-light activities such as taking a walk at dusk, going to the movies, or even driving at night.



## Nighttime Performance

With **TECNIS Symfony**<sup>®</sup> IOL, you may notice halos, starbursts, glare and other visual symptoms. This may impact your vision when there are bright lights at night.



## YOUR LENS OPTIONS

With your lifestyle there's an intraocular lens designed to fit your unique visual needs and priorities.



NEAR

INTERMEDIATE

DISTANCE

ASTIGMATISM  
CORRECTION

### TECNIS Symphony<sup>®</sup> EXTENDED RANGE OF VISION LENS

- High-quality vision over a continuous, full range of distances
- Reduction in how often patients wear glasses
- Does not correct pre-existing astigmatism



### TECNIS Symphony<sup>®</sup> TORIC EXTENDED RANGE OF VISION LENS

- High-quality vision over a continuous, full range of distances
- Reduction in how often patients wear glasses
- Corrects pre-existing astigmatism



### TECNIS<sup>®</sup> MULTIFOCAL LENS\*

- Ability to focus near and distance in most cases
- Dependence on glasses reduced
- Does not correct pre-existing astigmatism



### TECNIS<sup>®</sup> MULTIFOCAL TORIC LENS

- Ability to focus near and distance in most cases
- Dependence on glasses reduced
- Corrects pre-existing astigmatism



### TECNIS<sup>®</sup> MONOFOCAL LENS

- High-quality vision at one focal point- usually distance
- Need glasses for near vision
- Does not correct pre-existing astigmatism



### TECNIS<sup>®</sup> TORIC LENS

- High-quality vision at one focal point- usually distance
- Need glasses for near vision
- Corrects pre-existing astigmatism



**ATTENTION:** Reference the Directions for Use for a complete listing of Indications and Important Safety Information.

\*Indicated for intermediate vision

TECNIS and TECNIS Symphony are trademarks owned or licensed to Abbott Laboratories, its subsidiaries or affiliates.

© 2017 Abbott Medical Optics Inc. | PP2017CT0390—Canada